

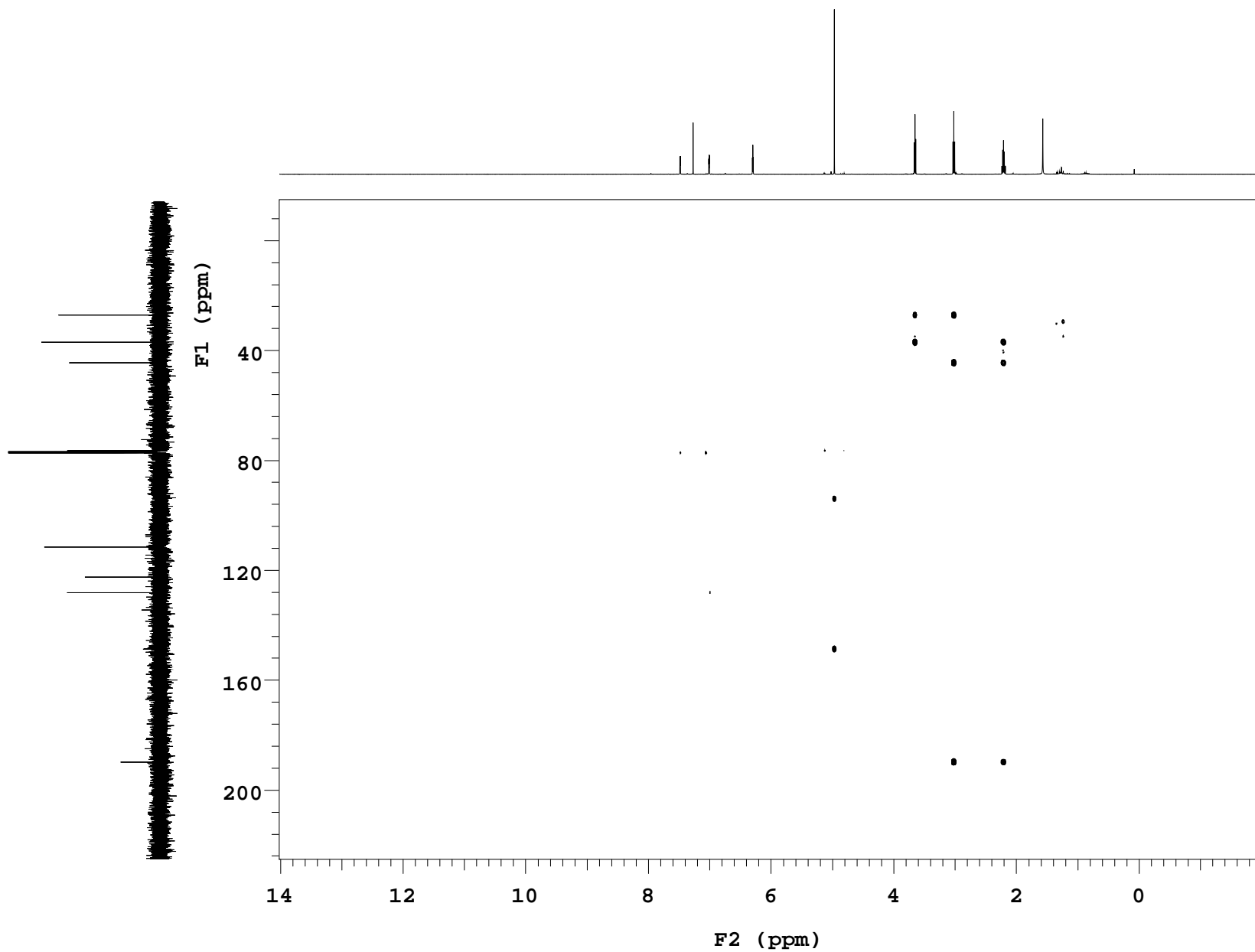
# JH431-2d\_data\_new

Sample Name **JH431-2d\_data\_new**  
Date collected **2022-10-03**

Pulse sequence **gHMBCAD**  
Solvent **cdcl3**

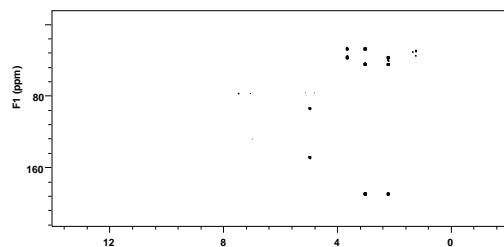
Temperature **25**  
Spectrometer **chpc-nmr500a-vnmrs500**

Study owner **jh2585**  
Operator **jh2585**



## JH431-2d\_data\_new

Sample Name	JH431-2d_data_new	Pulse sequence	gHMBCAD	Temperature	25	Study owner	jh2585
Date collected	2022-10-03	Solvent	cdcl3	Spectrometer	chpc-nmr500a-vnmrs500	Operator	jh2585



**SAMPLE**

date Oct 3 2022  
solvent cdcl3  
sample JH431-2d\_data\_new\_20221003\_01

decwave W40\_OneNMR  
dmf 32258  
dpwr 39  
pwxlvi 59.5  
pwx 9.800

## HMBC

j1xh 146.0  
jnxh 8.0

## ADIABATCIC

pwx180ad OneNMR\_ad300  
pwxlvi180 53  
pwx180 465.4

## FLAGS

hs nn  
sspul y  
PFGflg y  
hsglvi 6144

## SPECIAL

temp 25.0  
gain 48  
spin 0

## GRADIENTS

gzlvi1 512  
gt1 0.001000  
gzlvi3 1536  
gt3 0.001000  
gstab 0.000500

## F2 PROCESSING

sb -0.075  
sbs not used

fn 4096

**F1 PROCESSING**

gf1 0.004  
gfs1 not used  
proc1 lp  
fn1 2048

## DISPLAY

sp -1002.1  
wp 8008.9  
sp1 -1856.6  
wp1 30147.8  
rfi 1006.0  
rfp 0  
rfi1 1886.0  
rfp1 0

## PLOT

wc 197.0  
sc 0  
wc2 129.6  
sc2 12.7  
vs 35  
th 4  
ai cdc av

## ACQUISITION ARRAYS

array phase  
arraydim 256  
i phase  
1 1  
2 2

## ACQUISITION

sw 8012.8  
at 0.150  
np 2404  
fb 4000  
ss 16  
d1 1.000  
nt 4

## 2D ACQUISITION

sw1 30177.3  
ni 128  
phase arrayed

## PRESATURATION

satmode n  
wet n

## TRANSMITTER

tn H1  
sfrq 500.059  
tof 500.1  
tpwr 61  
pw 7.900

## DECOUPLER

dn C13  
dof 1285.9  
dm nnn

Plotname: gHMBCAD\_01\_plot01